

【Organization】

◆Members of the Institute of Social Sciences (as of May 1st, 2020)

○Researchers: 54

(Breakdown by faculty)

Faculty of Law: 18

Faculty of Economics: 10

Faculty of Commerce: 5

Faculty of Letters: 20

Faculty of Global Informatics: 1

○Visiting Researchers: 55

○Associate Researchers: 11

Total: 120

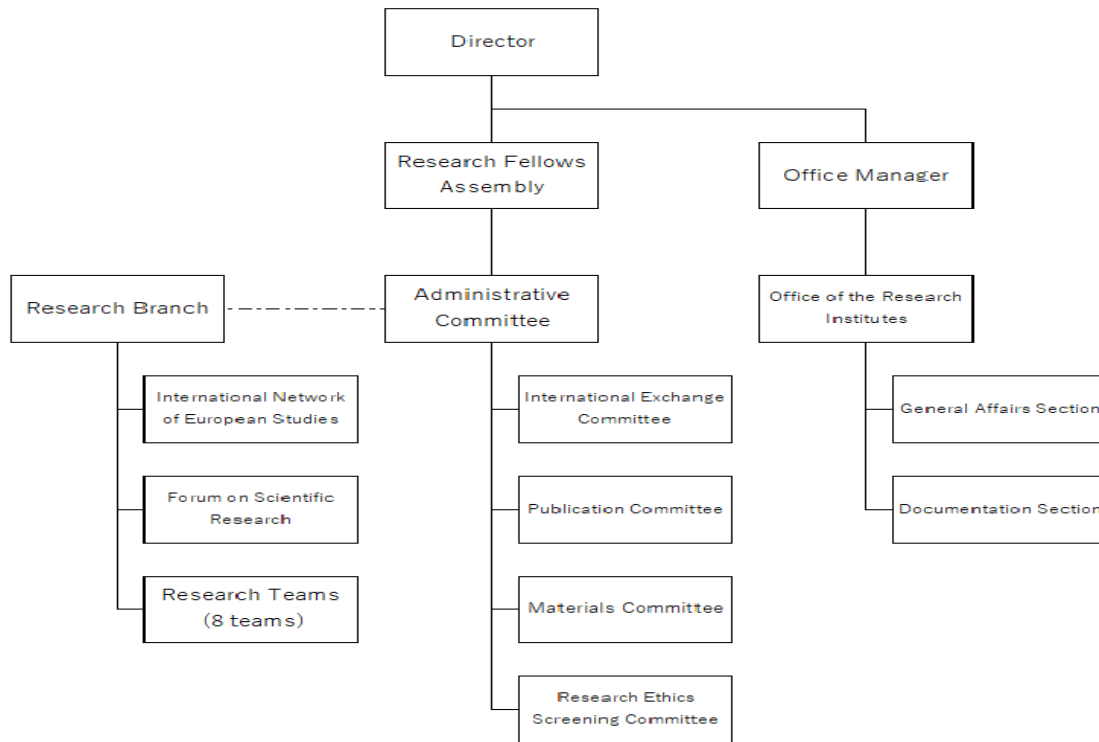
The Institute of Social Sciences is one of the nine research institutes in Chuo University, consisting of “Researchers”, “Visiting Researchers”, “Associate Researchers” and administrative staff.

“Researcher” is a full-time academic personnel of Chuo University. “Visiting Researcher” is a researcher participating in joint research at our institute, who is not a full-time academic personnel of Chuo University. “Assistant Researcher” is a researcher participating in joint research at our institute, who is Ph.D. students or equivalent.

◆Organizational Structure

The Research Fellow Assembly consisting of researchers is the highest decision-making organization of the institute. The Director of the institute is elected by the researchers and assumes responsibilities as the institute’s representative, leading the assembly, and deciding guidelines regarding operation of the institute.

Our institute conducts joint research activities by forming research teams. There are eight research teams currently in operation during AY2020: “Theory and Practice of International Relations”, “Development and Evolution of Information Society”, “Electorate and Politics” “Plurality of Families”, “Towards Comparatology of Nascent Moments”, “Transformation of Life Security System”, “Political ,Historical and Legal Analysis of Cultural Phenomena: Interdisciplinary Challenge” and “Political Awareness and Behavior”.



◆ International Exchange

With the mission of promoting interdisciplinary joint research on social sciences, the Institute of Social Sciences has been actively engaged in international exchange since establishment.

In earlier times, we were especially active in interacting with European institutions. With International Network of European Studies taking the lead, we had research exchange with University of Sheffield in UK and Aix-Marseille University in France.

Furthermore, we started extensive research exchange on a full scale from AY2001, by concluding research exchange agreements with University of Naples Federico II, Faculty of Sociology (AY2000-2003) ; University of Roma “La Sapienza”, Faculty of Sociology (AY2000-2003), Free University of Brussels, Institute of European Studies (AY2003-present), and University of Milano Bicocca, Faculty of Sociology (AY2003-present).

Based on these experience of international research exchange, we have also been actively engaged in exchange of researchers with institutions outside Europe, such as Asian and American countries in recent years.

◆ Acceptance of international researchers

Please refer to the below list for the researchers accepted at our institution in the past seven years.

Name	Institution, Title	Country	Category	Term
AY2020				
MARCHI, Jean-François	Associate Professor, Aix-Marseille Université	France	1	2020.11.7
MERCIER, Virginie	Associate Professor, Aix-Marseille Université	France	Visitor	2020.11.7
AY2019				
ZHANG, Tao	Associate Professors, Department of History, School of Humanities, Tsinghua University	China	1	2019.7.7-2019.7.28
HU, Peng	Professor, Institute of Japanese Studies, Chinese Academy of Social Sciences	China	Visitor	2019.6.25
RENOUX, Thierry	Professor, Université d'Aix-Marseille	France	Visitor	2019.6.3
AY2018				
ZHANG, Wenhong	Professor, School of Sociology, Shanghai University	China	3	2018.11.19-2018.12.4
AY2017				
DE VIVO, Paola	Full Professor, Department of Political Sciences, University of Naples Federico II	Italy	3	2017.9.3-2017.9.19
SANDERS, Nancy	Professor, College of Education and Integrative Studies, California State Polytechnic University Pomona	USA	3	2017.9.21-2018.2.3
AY2016				
RICHEY, Sean	Associate Professor, Georgia State University	USA	Visitor	2016.6.1
AY2015				
CASTELLA ANDREU, Josep Maria	Associate Professor, Faculty of Law, University of Barcelona	Spain	2	2015.7.4-2015.7.15
CHANG, Chia-Ming	Professor, Faculty of Humanities, Department of Sociology, Soochow University	Taiwan	Visitor	2015.12.7
HU, Liancheng	Reader, College of Foreign Languages, HUAQIAO University	China	2	2015.12.15~2015.12.9
FALTAN, Lubomir	Senior Researcher, Institute for Sociology, Slovak Academy of Sciences	Slovakia	Visitor	2016.3.18
AY2014				
RICHEY, Sean	Associate Professor, Georgia State University	USA	Visitor	2014.5.23
GODA Miho	Adjunct Associate Professor, Department of History, Chinese University of Hong Kong	Japan	Visitor	2014.6.17
SCAFF, Lawrence	Political Science and Sociology Professor, Wayne State University	USA	Visitor	2014.6.25
MESSNER, Steven	Professor, Department of Sociology, State University of New York-Albany	USA	2	2014.6.26-2014.7.5
TSAI, Chi Ting	Assistant Professor, Political Science, National Taiwan University	Taiwan	2	2014.6.20-2014.7.4
WIEVIORKA, Michel	Administrator, Maison des Sciences de L'Homme	France	Visitor	2014.7.15
SELIGMAN, Adam	Professor, Department of Religion, Boston University	USA	Visitor	2014.7.17
ANTONOVA, Natalia	Associate Professor, National Research University Higher School of Economics	Russia	Visitor	2014.7.22
KUPREYCHENKO, Sergey	Attorney, Moscow Board of Attorneys "KAGANER AND PARTNERS"	Russia	Visitor	2014.7.22

<Categories>

- 1: International researchers based on the exchange agreement (researcher exchange memorandum) .
 - 2: International researchers who participate in research and education based on invitation from Chuo University.
 - 3: International researchers who engage in research at Chuo University based on his/her own research plans or with recommendation by overseas higher education or research institutions.
- Visitor: International visiting researchers accepted for academic events such as lectures.