

# Chuo Exchange

Japan • 2026 Fall

# Program



# Table of Content

**1 Welcome to Chuo! p.3**

**2 Exchange program for Undergraduate students p.4**

**3 Exchange program for Graduate students p.6**

**4 Japanese Language Courses p.7**

**5 Length of Study and Timeline p.9**

**6 Student Status, Eligibility and Language Requirement p.11**

**7 Course Load and Credit Requirements p.15**

**8 Accommodation and Information on Costs p.16**

**9 Student Support Services p.21**

**10 General Information p.22**

*Welcome to  
Chuo!*



**32,478 Students**



**140th Founding Anniversary**



**6 Campuses**



**Tokyo, Japan**

# Exchange program for Undergraduate

Exchange students should apply for a faculty that relates to their major at their home university. If there is no such faculty at Chuo, (Japan Studies, etc.), the choice of faculty should correspond to the courses the student would like to take.

Faculty	Department/Major (Program)	Primary Areas of Learning
Law	Law	Japanese legal system (judge, prosecutor, and attorney), public law, corporate law
	International Law and Business	International law, international relations, globalization, international business
	Political Science	Japanese public policy, local autonomy, international relationships, journalism, NPO, NGO
Economics	Economics	Globalization, market principles, population, income disparity, employment, social security
	Economic Systems and Information <u>Analysis</u>	Business strategy, accounting, data analysis, ICT
	International Economics	Trade, multinational companies, economic development, world poverty issues, international cooperation
	Public and Environmental Economics	Japanese public policy, local autonomy, environmental problems, corporate social responsibility
Commerce	Business Administration	Corporate management, ICT, multinational corporations
	Accounting	Bookkeeping, accounting, auditing, taxation
	Marketing and International Trade	Distribution, marketing, consumer behavior, advertisements, international transactions
	Banking and Corporate Finance	Banks, securities, finance, insurance



Fundamental Science and Engineering	Mathematics	Statistics, analytics, algebra, geometry
	Physics	The universe, elementary particles, physical property physics, biophysics
	Applied Chemistry	Physical chemistry, inorganic and analytical chemistry, organic and life chemistry
	Biological Sciences	Molecules, cells, genes, microorganisms
Science, Engineering and Society	Civil and Environmental Engineering	Concrete, transportation, roads, soil, structures, the environment
	Data Science for Business Innovation	Production control, quality engineering, ergonomics, finance and insurance
	Integrated Science and Engineering for Sustainable Society	Environmental design, brain science, health
Advanced Science and Engineering	Precision Mechanics	Robotics, sound, thermal fluids, measurement and control
	Electrical, Electronic, and Communication Engineering	Electricity, energy, information networks, semiconductors and integrated circuits, radio waves
	Information and System Engineering	Computer graphics, algorithms, software
Letters (Department of Humanities and Social Science)	Japanese Literature	Japanese literature, Japanese, Japanese language education
	English Studies	British literature and culture, American literature and culture, English
	German Studies	German, German literature, German-speaking culture and history
	French Studies	French, French literature, French-speaking culture and history
	Japanese History	Japanese history, archeology
	Asian and African History	Asian history, Islamic history
	European and American History	European and American history
	Philosophy	Ethics, Japanese philosophy, Chinese philosophy, European and American philosophy
	Sociology	Social issues, social research, family
	Socio-Informatics	Media, journalism, social psychology, programming
	Education	Educational systems, educational methodology, educational history
	Psychology	Clinical psychology, counseling, cognitive psychology, developmental psychology
	Interdisciplinary Studies Program	Social cultures, sport cultures, inter-disciplinary studies
Policy Studies	Policy Sciences	Policy planning, politics, law, economy
	Cross-Cultural Studies	International relations, international regional culture, religion, media
Global Management	Global Management	Global management, corporate management, global economy
Global Informatics	Global Informatics	Information and Law, global liberal arts

# Exchange program for Graduate

Graduate School	Course
Law	Public Law / Private Law / Criminal Law / International Business Transaction Law / Political Science
Economics	Economics
Commerce	Commerce
Science and Engineering	Mathematics / Physics / Civil, Human and Environmental Science and Engineering / Precision Engineering / Electrical, Electronic, and Communication Engineering (first Ph.D. course only) / Applied Chemistry / Data Science for Business Innovation / Information and System Engineering (first Ph.D. course only) / Biological Sciences
Letters	Japanese Literature / English Studies / German Studies / French Studies / Chinese Studies / Japanese History / Asian and African History / European and American History / Philosophy / Sociology / Socio-Informatics / Education / Psychology
Policy Studies	Policy Studies

Academic Researcher Database: [https://c-research.chuo-u.ac.jp/html/home\\_en.html](https://c-research.chuo-u.ac.jp/html/home_en.html)



# Japanese Language Courses

Free of charge, with grade and credit

## Aim

Japanese Language program emphasizes not only lectures in class, but the learning process such as research, discoveries, and expressing the outcomes in words. The program aims to “connect with society” through each student’s learning of the language and culture in order to take full advantage of studying Japanese in Japan.





# Japanese Language Courses

## Course Components

### ●Levels:

Mainly 3 levels (beginner(A1,A2), intermediate(B1) and advanced(B2, C1))

Level Placement: will be decided based on the results of Writing test which held during the orientation week.

### ●Campuses offered: Tama & Korakuen

### ●Course composition:

Each course offered in two consecutive periods (ex. 1<sup>st</sup> & 2<sup>nd</sup> periods), students are required to register two classes as a set.

### ●Course load per semester: 200 minutes/week x 14 weeks/semester

### ●Credit(s) : 2 credits/semester (1 credit each per class)

\*Only exchange students enrolled in the Faculty of Fundamental Science and Engineering/ Science, Engineering and Society/ Advanced Science and Engineering are permitted to take just one class per week which will be offered on the Korakuen Campus. In this case student earn 1 credit per semester.







## *Length of Study* ✈️

**One year(2semesters) or  
One semester**

Exchange students are accepted to Chuo either from April or September.

Since we have many full-year courses, entering for a full academic year(starting in April) is highly recommended.



## 2026 Fall Start (Semester 1)

Semester1(Fall)	September 21 to late January
Nomination period	Graduate: Feb 15, 2026 / Undergraduate: Mar 15, 2026
Application period	Graduate: Mar 1 -15, 2026 / Undergraduate: April 1-15, 2026
Acceptance letter will be issued	Late June, 2026
Arrival & Orientation	Mid of Sep, 2026
Examinations and Vacation	Examinations: Late January, Spring Vacation: February 1-March 31

## 2027 Spring Start (Semester 2) (Tentative)

Semester2(Spring)	April 1st to late July
Nomination period	Graduate: Sep7, 2026 / Undergraduate: Sep30, 2026
Application period	Graduate: Sep15-Sep30, 2026 / Undergraduate: Oct15-Oct31, 2026
Acceptance letter will be issued	Early Feb, 2027
Arrival & Orientation	Late March, 2027
Examinations and Vacation	Examinations: Late July , Summer Vacation: August 1 - September 20



# Student Status at Chuo

## Undergraduate program: Senkasei ( Full time non-degree student)

Students can apply to enroll in any academic courses in the regular curriculum offered by the Faculty in which they are registered. Academic courses in other Faculties may be taken upon approval of the Faculties concerned and according to the regulations of those Faculties. Credits and grades will be granted if students satisfactorily fulfill course requirements.

## Graduate program: Senkasei ( Full time non-degree student) or Kenkyusei (Non-degree research student)

Senkasei can apply to any academic courses in the regular curriculum offered by the Graduate School in which they are registered. Senkasei in the graduate program may also take undergraduate courses. However, these courses will be taken as an auditor, and no academic credit will be awarded.

A Kenkyusei conducts specific research under the supervision of an academic adviser. Credits and grades are not granted. If you are a doctoral student, you must select Kenkyusei.

# Eligibility

Students must be currently enrolled at the partner institution, and are expected to complete at least one academic year (two semesters) of study at the home institution before start exchange study at Chuo University.

- Undergraduate: Must have completed secondary education.
- Graduate: Must have completed their undergraduate studies and obtained an undergraduate university degree (Bachelor degree) or equivalent from their home institution by the time of application.

## GPA

2.50 or above out of 4.00 (a GPA below 2.50 can be considered on a case by case basis, please consult before the nomination.)



# Language Requirement

Undergraduate program	
Law/Economics / Letters / Policy Studies / Global Management	While Chuo University does not ask for an official language proficiency score, we hope students have enough English or Japanese skills to enjoy and keep up with the academic courses taught in either language. We recommend a JLPT N3 or higher for students who wish to take courses taught in Japanese.
Commerce	JLPT N2 or equivalent, JLPT certificate is not necessary
Global Informatics	Either JLPT N1 or N2 certificate is mandatory
Fundamental Science and Engineering/ Science, Engineering and Society/ Advanced Science and Engineering	<p>JLPT N1 or N2 is required to take academic courses taught in Japanese. JLPT Certificate is mandatory.</p> <p>JLPT N3 is suggested to take academic courses taught in English. Either the following additional material must be submitted for individual review.</p> <ul style="list-style-type: none"><li>-Certificate of Japanese Language Proficiency (Format F)</li><li>-Certificate of JLPT if you have</li></ul>

# Language Requirement

Graduate program	
All	JLPT N1 or N2 is required to take academic courses taught in Japanese. JLPT Certificate is mandatory for taking courses taught in Japanese.



# Course Load & Credit Requirements



To fulfill visa requirements, exchange students must attend 6 classes or more, or conduct research more than 10 hours per week. Enjoy academic interaction opportunities to study with local students as well as degree-seeking international students.

## Credit

Academic courses (Major course subjects)

100 min./class x 14 weeks/ semester = **2 credits**

100 min./class x 28 weeks/ year = **4 credits**

Japanese Language classes

100 min./class x 14 weeks/ semester = **1 credits**

\* There is no minimum/maximum number of credits required for exchange students. HOWEVER, to fulfill Japan's student visa requirements, exchange students must attend 6 classes or more, or conduct research more than 10 hours per week.

\* Credits and grades earned at Chuo University may be transferred to the student's home institution, depending on the home institution's regulations. Even when Chuo does not give credits, home institutions may grant credits for courses. Arrangements for credit transfer must be negotiated by the student with the home institution.

# Accommodation

## Type of Accommodation

### On-campus: International Residence Chuo(IRC)

<https://www.chuo-u.ac.jp/english/admissions/residences/irc/>

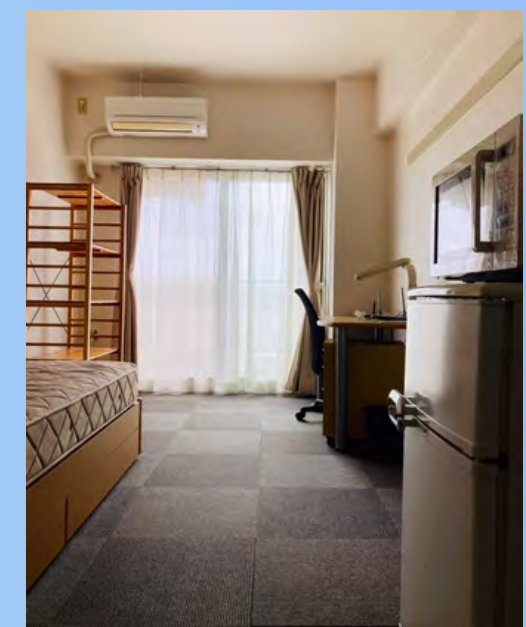
It is a student residence on Tama Campus where international students and Japanese students can deepen their understanding of different cultures through shared living quarters. IRC has units containing six single rooms.



### Off-campus: Chuo International Residence at Seiseki-Sakuragaoka

This dormitory is close to Tama Campus, near Seiseki-Sakuragaoka Station on the Keio Line. All rooms are single-occupancy. Because space is limited, priority is given to graduate and undergraduate students whose home campus is in central Tokyo.

Travel time to the Korakuen, Myogadani, and Ichigaya-Tamachi campuses is roughly 60–90 minutes.





# Accommodation

## Type of Accommodation

### Off-campus: Chuo International Residence at Myogadani

This dormitory is located in Bunkyo City and is close to both the Myogadani Campus and the Korakuen Campus. It is a 2-minute walk to the Myogadani Campus and about 15 minutes to the Korakuen Campus by walking and bus. All rooms are single-occupancy. Because space is limited, priority is given to graduate and undergraduate students whose home campus is in central Tokyo.



# Accommodation



## Rental Fee for Academic Year 2026

**\*Starting from Fall 2026, dormitory fees will change. The fees vary depending on the dormitory.**

\*Room rental fees are subject to change without notice.

\*Once exchange students reserve accommodation, they will be liable for a cancellation fee.

\*Contract period depends on study period at Chuo. In principle, student cannot move out during the contract period. There will be no refunds of the money once paid under any circumstances.

\*It is your responsibility to bear the full amount of the room rental fee for the entire term of the contract even if you move out of the dormitory in the middle of the contract for an inevitable reason, except for health or family emergencies.

\*Even If you move in to the dormitory after the designated contract period starts, the dormitory fee and other fees will be charged from the contract start date.

Dorimitory	Study Period	Total Rent Fee Including utility costs (electricity, gas, water) and internet fees.
IRC	1semester(Fall 2025)	approx. 350,000JPY
	2semester(Fall2025+Spring2026)	approx. 750,000JPY
Seiseki	1semester(Fall 2025)	approx. 380,000JPY
	2semester(Fall2025+Spring2026)	approx. 780,000JPY
Myogadani	1semester(Fall 2025)	approx. 540,000JPY
	2semester(Fall2025+Spring2026)	approx. 1,143,000JPY



# Accommodation



## Rules to run community life smoothly

- Residents shall participate in weekly unit meetings, events, orientations, etc. in the dorm.
- Entry into the dorm by non-residents is prohibited.
- Entry into living areas of other genders is prohibited at all times.
- Students are allowed to enter only the relevant areas.
- All should maintain a quiet environment after 21:00.

## Other Housing Arrangements

We introduce real estate agency that manage rental properties near these campuses.

It is possible to sign a rental contract before arriving in Japan (no guarantor required). The agency also offer services such as airport pickup and assistance with procedures at the local city office upon arrival.



# Information on Costs



## Tuition fees

As a general rule, exchange students from institutions that have concluded a mutual tuition fee waiver exchange agreement with Chuo University are exempt from the registration fees and tuition fees of Chuo University.

## Living Expenses

Students are responsible for their own living expenses, including accommodation, meals, transportation, and other personal costs. The estimated monthly cost of living in Tokyo is approximately Approx. 50,000 JPY/month (without accommodation fee) .

## Scholarship

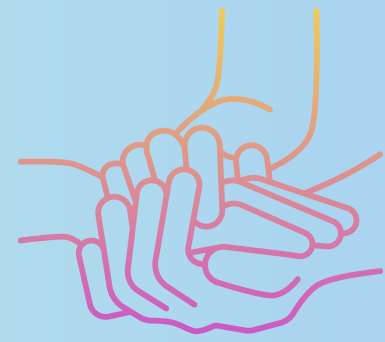
No scholarships are offered to exchange students, except by some partner universities.

## National Health Insurance

All exchange students are required to enroll in Japan's National Health Insurance (NHI) upon arrival. The monthly premium is approximately JPY 2,000. This insurance covers a significant portion of medical expenses incurred during the student's stay in Japan.



# Student Support Services



To ensure a safe and fulfilling experience on campus, we offer a variety of support services for all students.

## Health Center

Health Center provides support for physical well-being. A doctor and nurses are available on site (mainly internal medicine).

## Student Counseling Room

Professional counselors are available, including clinical psychologists, a psychiatrist, and a legal advisor.

## Diversity Center

Diversity Center supports students with physical disabilities or chronic illnesses, and offers resources on gender and sexuality, multicultural understanding, and cross-cultural issues. English support is available.

## Academic Support Center (Tama Campus)

Academic Support Center accommodates the Writing Lab, where international students can receive guidance from graduate students for writing and using Japanese expressions for course assignments and for their graduation thesis.

# General Information



## Contact Office

International Center

Address: 742-1 Higashinakano, Hachioji-shi,  
Tokyo, Japan, 192-0393

## Contact Information: Inbound Coordinator

Coordinators: Ms. Ishigooka & Ms. Konagaya

Email address: exchange-grp★g.chuo-u.ac.jp

When sending the email, kindly replace the ★ symbol with @.

## Official Website for Incoming students

<https://www.chuo-u.ac.jp/english/admissions/exchange/semester-or-full-year/>



# Campuses and International Hubs

## 6 Campuses



## International Hubs

Chuo University has four hubs overseas, which support exchanges of students and researchers, as well as overseas activities such as Global Studies conducted by Faculties.

**Chuo University Pacific Office** (Hawaii, USA)  
Established in December 2013 at the University of Hawai'i at Manoa



**Chuo University Shanghai Office** (Shanghai, China)  
Established in October 2016 at the University of Shanghai for Science and Technology



**Chuo-Thammasat Collaboration Center** (Bangkok, Thailand)  
Established in December 2014 at Thammasat University



**Chuo University Hanoi Office** (Hanoi, Vietnam)  
Established in September 2022 at the Japanese International School (JIS)



**5 ICHIGAYA TAMACHI Campus**  
Faculty and Graduate School of Global Informatics



**6 SURUGADAI Campus**  
Chuo Law School (CLS) / Chuo Graduate School of Strategic Management (CBS)





# Thank You

Tel: +81-42-674-2211

exchange-grp@g.chuo-u.ac.jp

<https://www.chuo-u.ac.jp/english/>

